

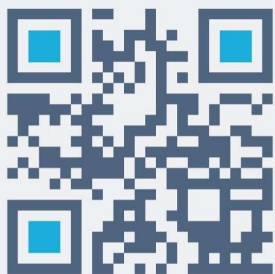


THE POWER TO DETECT  
AND ACT AT THE HEART OF  
YOUR INSTALLATIONS  
THANKS TO ON-BOARD AI

# YUMAIN

## Head office

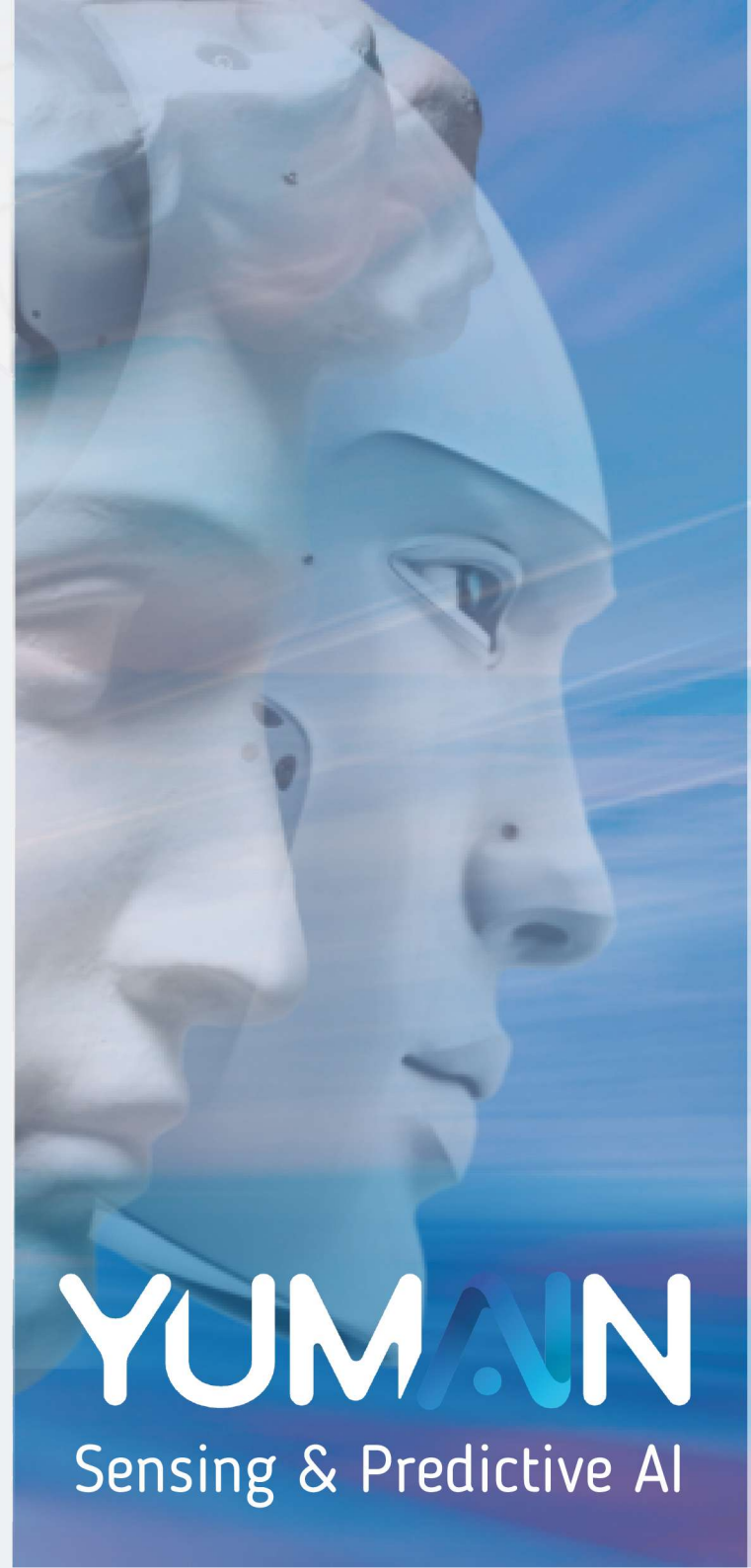
15 rue des Prés Potets  
21 121 Fontaine-Lés-Dijon  
France  
+33 3 80 37 17 95



[www.yumain.fr](http://www.yumain.fr)

# YUMAIN

Sensing & Predictive AI



# INTELLIGENT DETECTION SOLUTIONS

## YUMAIN, FOR YOUR SAFETY AND PRODUCTIVITY

**YUMAIN** solutions are exclusive **event detection systems** based on image analysis using **artificial intelligence (AI)**. The efficiency, robustness and performance of our solutions are based on a solid trio of expertises: real-time signal processing, the use of embedded AI (Edge-computing), and information acquisition in industrial environments.

## POSSIBLE APPLICATIONS



AUTOMATIC PANTOGRAPH  
DETECTION AND ANALYSIS



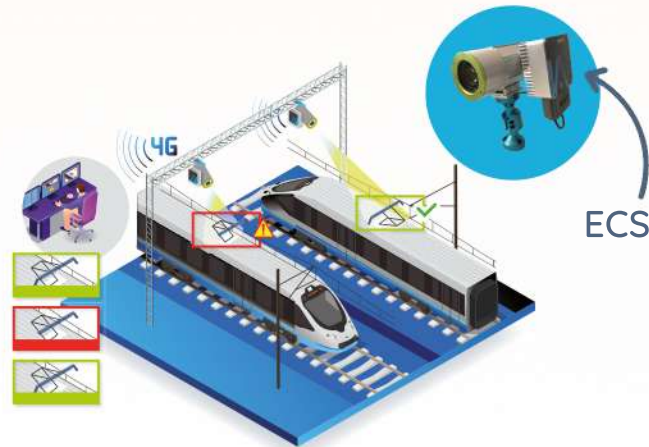
PREVENTING  
PEDESTRIAN/VEHICLE  
COLLISIONS



SECURING AREAS

## Rail and Tramway

### Pantograph Monitoring System (PMS) for trains/trams



**YUMAIN's ECS** helps maintenance managers to ensure the **reliability** and **safety** of their trains/tramways by detecting, **in real time** thanks to **on-board AI**, signs of damage to pantographs as they pass under the camera.

### Our dedicated data management tool



Our ECS **automatically** sends the slightest sign of anomaly to our dedicated **ECS-View** tool, easily accessible by our technical teams. This enables **targeted, proactive** intervention, significantly **saving time** and **boosting productivity**.

## Industrial safety

### Collision prevention & Site security



**YUMAIN's ECS** helps QHSE managers keep their sites **safe** and **productive** by **detecting** potential collision hazards in sensitive areas in **real time**, thanks to **on-board AI**.

It is also capable of providing **area security** and **perimeter protection**.

## Customized studies

Thanks to its expertise and **neural technology**, **YUMAIN** is able to carry out studies and provide **customized AI signal processing solutions**.

Contact us to find out more !  
[contact@yumain.fr](mailto:contact@yumain.fr)